

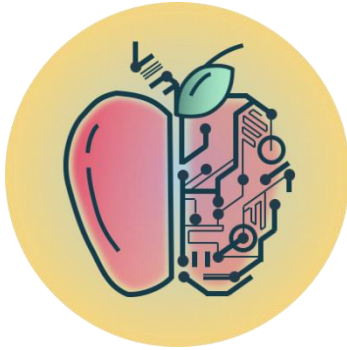


VANDERBILT
UNIVERSITY

Education Brain Sciences Research Laboratory

Laurie E. Cutting, Ph.D., Principal Investigator
Vanderbilt University, Department of Special Education

Reading Comprehension Study



Adults ages 18 and older are invited to be part of a research study on the effects of text features on reading comprehension.

The study includes:

- Initial eligibility screening
- Answer some questions about your background.
- Read two groups of 22 short passages, and rate each passage based on four factors.

If you participate, you will receive:

- \$25 e-gift card for each group of passage ratings completed.

Complete the eligibility screening online:

<https://redcap.link/ebaivpsr>



***Or contact us for more information at
615-875-5534 or EducationBrain@vanderbilt.edu***

Sponsored by the National Institute of Child Health & Human Development, National Institutes of Health



Date of IRB Approval: 12/05/2022

Institutional Review Board

